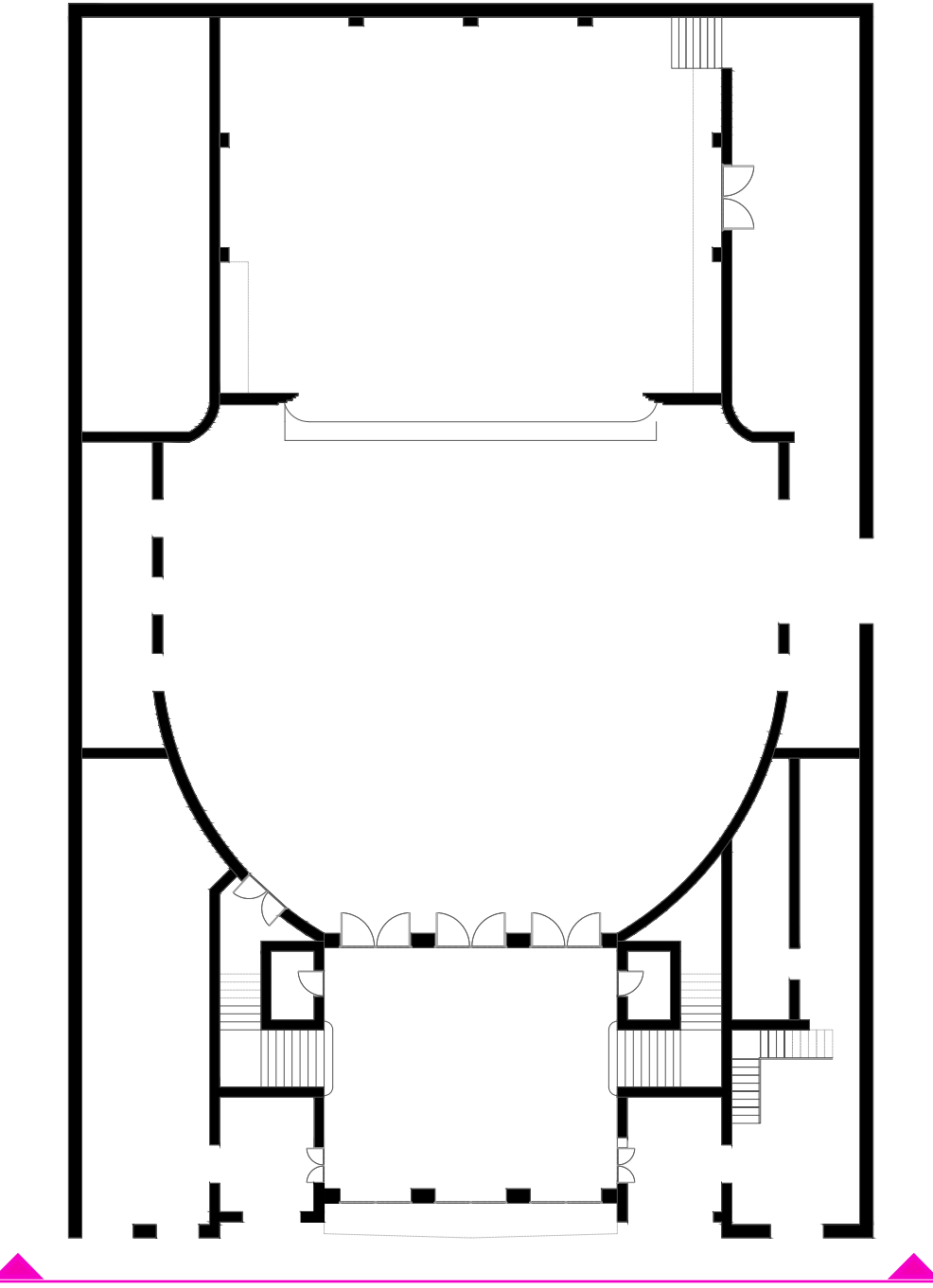


STATE OF CONSERVATION ANALYSIS

EAST FACADE

Ground floor 1:250



East facade 1:75



PHOTOGRAPHIC SURVEY

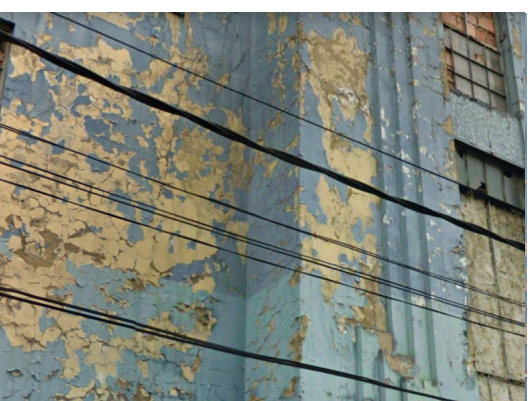
Fissures



Graffiti



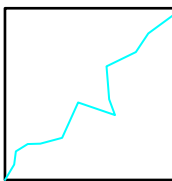
Exfoliation



Lost

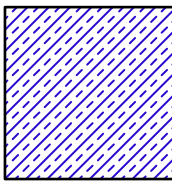


DECAYS



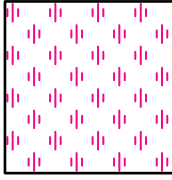
Fissures

Degradation that occurs with the formation of continuity solutions in the material and that may involve the mutual displacement of parts. The most common causes are frost and thaw cycles, the failure of the supporting masonry, or physical-mechanical incompatibility between the support and the finish.



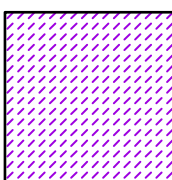
Graffiti

Engraving, scratching, cutting or application of paint, ink or similar matter on the stone surface. Commonly the cause of this degradation is the lack of use of the property, allowing it to be perceived as abandoned, leading to possible vandalism.



Lost

Loss of three-dimensional elements. In this case, the loss of the enclosure elements such as windows frames and glass, some are missing partially and some are missing completely.



Exfoliation

Detachment of multiple thin stone layers (cm scale) that are sub-parallel to the stone surface. The layers may bend, twist in a similar way as book pages. One of the main causes is the movement of water within the sub-layer, the action of micro-organisms or the application of pelliculating paint products on traditional substrates.

-ICOMOS-ISCS Illustrated glossary on stone deterioration patterns.
-77° UNI 11182, Cultural heritage, natural and artificial stone materials, Description of the form of alteration - Terms and definitions Italian standard 2006.

PROPOSED INTERVENTIONS

Fissures

1. Cleaning of dust and loose deposits with a sorghum brush.
2. Grouting and application of surface finishing layer.
3. Application of paint with a protective layer

Graffiti

1. Wet/dry cleaning to remove deposits, also the use of gel products containing terpenes and surfactants is permitted.
2. Use of thickening solvents, laser removal.
3. Application of a new anti-graffiti paint that prevents degradation.

Lost

1. Removal of the still existing window frames and glass parts.
2. Replacement of the altered window frames with new ones following the original aspect.

Exfoliation

- 1.Total removal of chromatic layer with the aid of spatulas.
2. Dry cleaning of the wall using sorghum brushes.
3. Grouting, repointing of joints and application of a new chromatic layer according to original color.